

CxL

Laboratory Microscopy



LABOMED 

ideas for vision

Where Style Meets Function



1

Our LP series objectives enable you to view an assortment of specimens with the highest degree of clarity. CxL's Semi Plan Achromatic optical system has been designed to provide true color and contrast.

2

With a compact design and robust mechanical stage with fluid X/Y operation, maintenance free operation is a standard.

3

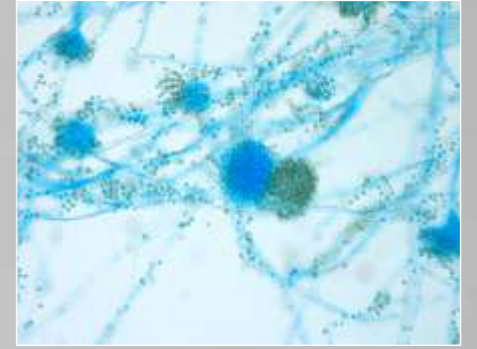
CxL offers you flexibility in illumination. You can stay with the standard 20W high efficiency halogen bulb, or you can opt for a Bright LED, providing illumination in a near daylight spectrum.

CxL

Adapted for both classroom and lab environments, the new CxL reflects a fresh design and delivers a rugged exterior with quality optical and mechanical ingredients for a lifetime of carefree use. This next generation microscope asserts its sophistication not only by design, but also through flawless functionality. In light of the latest in manufacturing technology, the highly modular CxL can offer you a high degree of performance for various applications.

With all LED free optical components and paints, the CxL is an environment friendly solution.

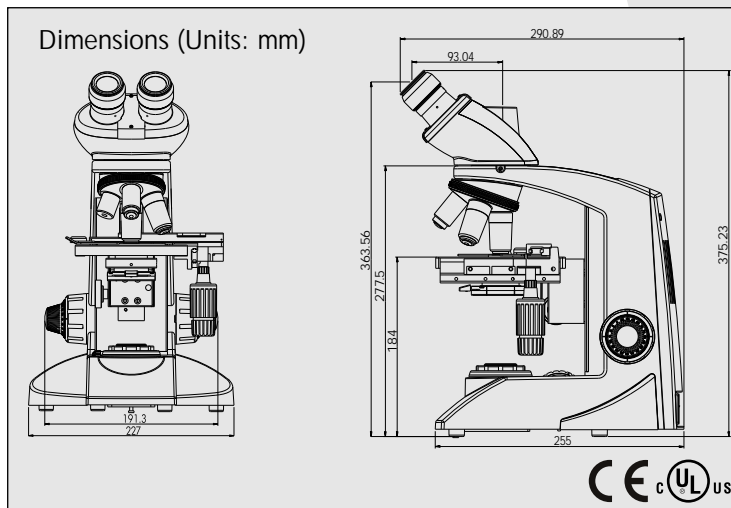
And best of all, you won't need to break the bank to own one!



CxL Laboratory Microscope

Item	Specifications
- Stand	Single mold sturdy stand with anti rust materials. Extended base for better stability
- Viewing Bodies	45° inclined, 360° rotatable dovetail, Inter pupillary distance 54 - 74mm
- Eyepiece	Wide field focusable paired eyepiece* 10x/18mm with foldable eye guard, lockable, antifungal
- Nosepiece	Quadruple Nosepiece (Ball bearing type) with rubber grip
- Objectives	LP series DIN Semi Plan Achromatic objectives* 4x,10x, 40x (spring loaded), 100x (spring loaded, oil), anti fungal
- Mechanical stage	Rectangular stage size 135 x 124mm, X/Y travel range 76mm x 50mm. Low drive movement controls, single specimen holder
- Condenser	Sub stage Abbe condenser NA 1.25 with aspheric lens* . Iris diaphragm with snap-in blue filter. Rack and pinion movements on metal guides
- Focusing	Co-axial coarse and fine focusing on ball drive system for smooth operation. Fine drive movement 0.3mm/rotation
- Illumination	LED [†] or Halogen 6V-20W illumination with variable illumination control. Up to 100,000 hours of LED life and 2,000 hours of Halogen lamp life
- Electricals	Universal input 100V - 240V AC, 50/60Hz. Built in voltage stabilizer
- Optional accessories	Phase contrast kit with 10x/40x LP series Phase objective, Polarizing kit, Dark field kit, Green Filter, Video adapter, Labomed Digital cameras

Specifications



Configurations

Description	Configuration	Cat. No.
Halogen		
3 obj. 4x, 10x, 40x (SL)	Monocular, Integrated Eyepiece	9135000
Standard*	Monocular, Integrated Eyepiece	9135001
Standard*	Binocular	9135002
Standard*	Trinocular	9135003
Standard*	Trinocular, Digital 1.3MP camera	9135004
LED [†]		
Standard*	Monocular, Integrated Eyepiece	9135005
Standard*	Binocular	9135006
Standard*	Trinocular	9135007
3 obj. 4x, 10x, 40x (SL)	Monocular, Integrated Eyepiece	9135008

* Standard versions are with 4 objectives 4x, 10x, 40x (SL) and 100x (SL, oil)
[†] LED version is with rechargeable battery and detachable power cord
 * All optical components are made of environment friendly LEAD free optical glass.

Labo America, Inc.
 920 Auburn Court
 Fremont, CA 94538
 U.S.A.

Tel: (510) 445-1257
 Fax: (510) 991-9862
 Email: sales@laboamerica.com



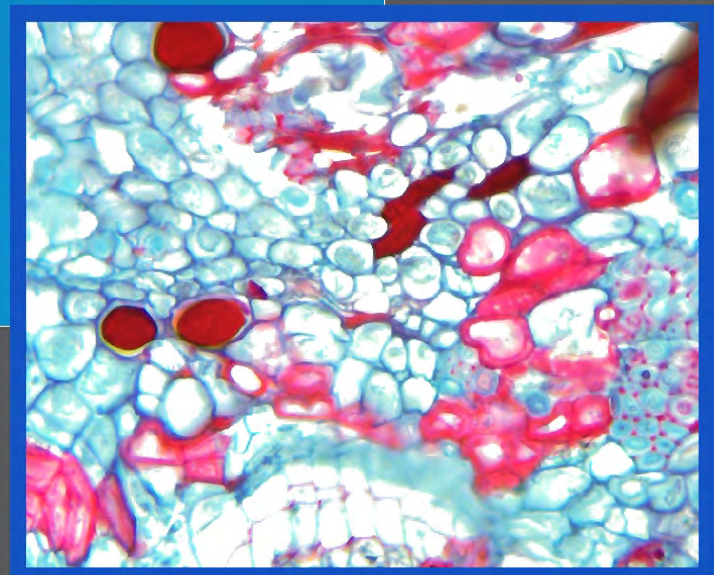
laboamerica.com

Distributor

BKS & Associates LLP
 10 Ubi Crescent #04-79 Lobby D
 Ubi Techpark, Singapore 408564
 Tel: 6749 2341 Fax: 6749 3936
 Email: info@bksna.com.sg

iVu 5100

Digital Imaging Module



LABOMED
ideas for vision

iVu 5100 Digital Imaging Module

Technical Data

Specifications

- Sensor: 1/2.5" 5.0 Megapixel Color CMOS; Active area: 5.70mm x 4.28mm
- Sensor resolution: 2592 x 1944 pixels
- Pixel Size: 2.2 μ m x 2.2 μ m
- Digitization: 12 Bit RGB
- Pixel clock: 48 MHz
- Dynamic range: 68 dB (measured at 10 ms exposure)
- Max. exposure: 3s
- Min exposure: 1s
- Live Image: 30 fps (1280 x 720) for Digital and 30 fps (720P) for Analog
- Scan Mode: Progressive
- **Image resolution:**
- Standard: (2592 x 1944)px
(280x 720)px
(640 x 480)px
- Interface: USB 2.0 and Composite Analog Out
- Optical connection: C-mount
- Voltage Supply: 5V/2Amp through USB 2.0 or Exertnal Supply
- Power consumption: approx. 1.8W
- Ambient conditions: Temperature: -30°C...+70°C; Humidity: up to 80%, not condensing
- Indicator: Green LED indicating power on and ready for capture
- Integrated slot: SD card slot for SD and SDHC Cards
- Recording: Button for image capture and video capture
- Refresh: Reset toggle refreshes white balance and restores camera to factory preset
- Analog Interface: NTSC/PAL toggle switch on board
- External Power: Optional power adapter available for when USB power not available
- System requirements: Microsoft XP/Vista/7 OS, 3 Ghz CPU, 2GB RAM (if 1GB, recommend 64MB graphics card), USB 2.0
- Software: PixelPro™ Image Analysis Software for capturing still images and videos. Software provides an easy to navigate user interface designed for routine analysis. Control features include Auto White Balance and Auto Exposure adjustments, Picture quality adjustments, Annotations, Measurement functions & Calibration, Region of Interest selection, Archival of images in an easy to use gallery, and a variety of resolutions to view images at. Software is compatible with Windows XP/Vista/7 Operating Systems

Specifications

Labo America, Inc.

920 Auburn Court
Fremont, CA 94538
U.S.A.

Tel: (510) 445-1257
Fax: (510) 991-9862
Email: sales@laboamerica.com



ISO 9001:2008
File No. A9020

laboamerica.com

Distributor

BKS & Associates LLP
10 Ubi Crescent #04-79 Lobby D
Ubi Techpark, Singapore 408564
Tel: 6749 2341 Fax: 6749 3936
Email: info@bksna.com.sg